

JDX系列齿轮箱实际速比表
The table of real speed ratio of JDX family gearbox

型号 Specification	名义速比 Nominal speed ratio							
	3.15	3.55	4.0	4.5	5.0	5.6	6.3	7.1
JDX-28	3.1724	3.5185	4.0741	4.4800	4.9565	5.5714	6.3200	7.0000
JDX-36	3.1471	3.5484	4.0323	4.4138	5.0690	5.5556	6.3333	7.0455
JDX-45	3.1923	3.5417	3.9545	4.4500	5.0833	5.6818	6.3500	7.1667
JDX-56	3.1538	3.5417	4.0370	4.4800	4.9565	5.5357	6.3200	7.0000
JDX-63	3.1000	3.5556	4.0833	4.5455	4.9231	5.6522	6.3333	7.1053
JDX-71	3.1071	3.5600	3.9643	4.5200	5.0000	5.6538	6.2500	7.1905
JDX-80	3.1613	3.4828	4.0000	4.4167	5.0000	5.5417	6.3333	7.1579
JDX-90	3.1667	3.5926	4.0000	4.4348	5.0833	5.6364	6.3000	7.1111
JDX-100	3.1538	3.5000	4.0417	4.5000	5.0435	5.6191	6.4091	7.1500

工作机 Working Machine		每天运行时间 Daily driving time	传动系数 C Transmission Coefficient C
均匀、平衡 even stable	U	断续的 3 小时 3 hours intermittently	0.9
		连续24小时 24hours continuously	1.0
中等振动 middle vibration	M	断续的 3 小时 3 hours intermittently	1.12
		连续24小时 24hours continuously	1.25
严重冲击 strong shock	H	断续的 3 小时 3 hours intermittently	1.4
		连续24小时 24hours continuously	1.6

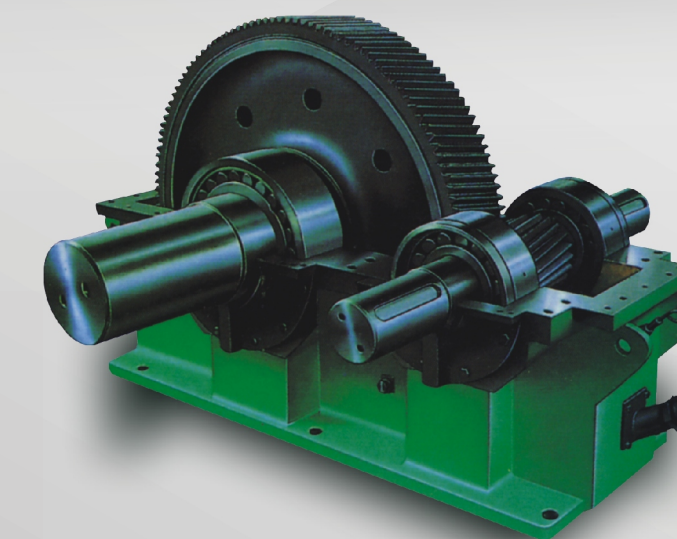
- 注：1、很少出现的最大扭矩T_{max}（如：在起动时）和原动机的额定扭矩的比值T_{ma}/T_n不应超过所列传动系数的2.5倍。
- 2、持续运行时产生的最大扭矩T_{max}和电机额定扭矩T_n之比值。不应超过所列传动系数的1.5倍。
- 3、如果由于特殊原因，这些前提不能实现，则需要相应提高传动系数。

Remarks:

- The seldom-appeared maximum moment of torque T_{max} (i.e.while starting)and the rated moment of torque of the prime mover's proportionality T_{max}/T_n shall not exceed 2.5times of the ranked transmission coefficient in the diagram.
- The proportionality between the maximum moment of torque T_{max} created during the continuous operation and the rated moment of electric motor T_n shall not exceed 1.5 times of the ranked transmission coefficient.
- In case these premises could not be realized owing to some special causes,the transmission coefficient shall be relevantly improved.

碾磨机类	金属滚轧机类	食品工业机械类
Mills	Metal rolling mills	Food industry
球磨机	钢坯和板坯轧机	灌注及装箱机械
Ball mills	Billet and sheet bar mills	Filling and packing equipment
旋转式磨碎机 Rotary mills	冷轧机	甘蔗粉碎机
U	Cold rolling mills	H
轮碾机	连铸成套设备	H
H	Continuous casting plants	M
Pan grinders	交叉转弯输送机	M
离心磨碎机	Cross-change direction conveyors	
H	除锈机	H
Centrifugal mills	Descaling machines	
H	焊管机	H
筒形磨机	Tube welding machines	
Rod mills	研压机	H
升降机类	Streching mills	H
H	剪板机	H
Lifts	Cropping chears	
建筑升降机	石油工业机械类	
H	Oil industry	
Builders hoists	输油管油泵	M
H	Pipeline pumps	
卷扬机	转子钻井设备	H
Hoisting winches	Rotary drilling plants	
H	石腊压滤机	M
升降机	Paraffin filter presses	
Mine hoists	精炼设备	M
正常负荷的起重机	Refinery machines	
M	活塞泵	H
Goods lifts normalduty	Piston pumps	
H	柱塞泵	H
载入电梯	Plunger pumps	
Passenger lifts		
M		
连杆式输送机		
Levev-type conveyors		
M		
螺旋式输送机		
Screw conveyors		
H		
标准负荷的输送机		
Conveyors normalduyt		
U		

JDX 系列工业齿轮箱
JDX FAMILY INDUSTRIAL GEARS



单级平行轴传动形式。
 Single-stage parallel shaft transmission type

广泛应用于水泥、冶金、石油和各种轻工业机械。
 Widely used in the fields of cement metallurgy petroleum and varied kinds of light industrial machinery.

齿轮及轴齿轴渗碳淬火并经精密磨齿。
 Case hardened and finish ground to the gear and shaft gear.

低噪音
 Low noise

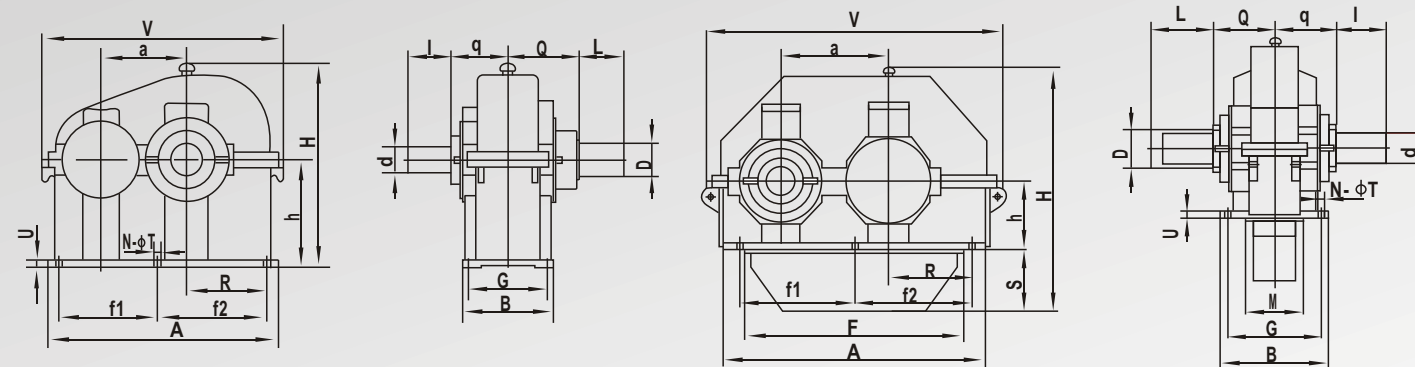
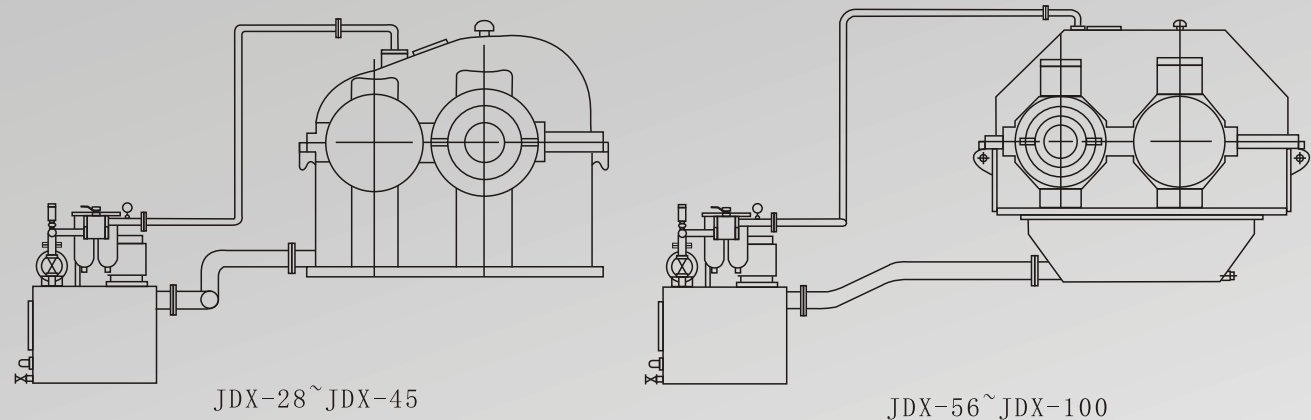
速比范围：3.15~7.1
 Range of speed ratio:3.15~7.1

中心距：280~1000mm之间
 Center distance:within 280~1000mm

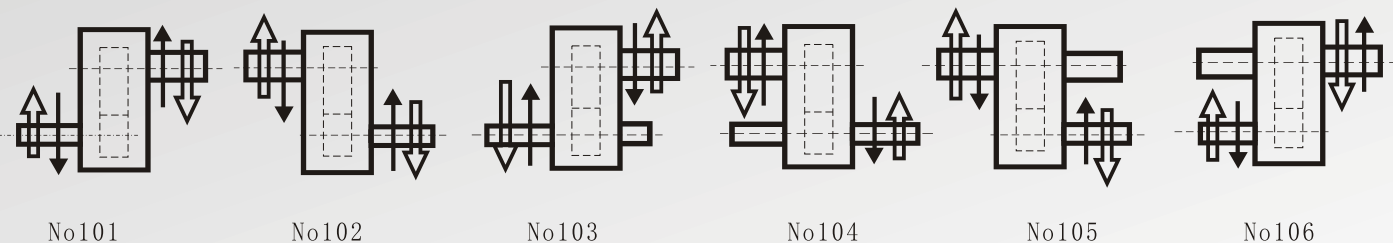


地址：中国 重庆 江津
 邮编：402263
 电话：(023)47211101 47211117
 传真：(023)47211011
 HTTP://WWW.CHONGCHI.COM
 E-MAIL:CGCLCC@CTA.CQ.CN





JDX系列齿轮箱结构形式:



齿轮箱的选择及订货说明Gears selection and ordering detail

齿轮箱的选择根据所需要的功率，输入转速，减速比和传动系数C（见第5页）来选择齿轮箱的型号。参见第4页上的功率表。表中所列功率 $P_n = P \cdot C$ (kw) 式中：P—所需功率，C—传动系数。而所需的功率和传动系数C参照第5页的功率表。订货时，除了注明齿轮箱的型号、速比和结构号之外，（如JDX45齿轮箱速比U=5，结构号No101）还有必要说明。

发动机：额定功率P
 转 速n
 工作机：类型与性质
 转 速
 齿轮箱每天的工作时间
 主从动轴上的联轴节形式。
 如有其它特殊订货要求，请您发出询问。

The gear size selection based on the required rating input speed, reduction and transmission coefficient is made from rating diagrams on page5 and page4. within the diagram. Prefers to required rating and C refers to transmission coefficient in the formula of $P_n = P \cdot C$ (kw) While ordering please state the gear's specification, reduction ratio, design number and the following datas.

engine: rated power (p)
 speed (n)
 working machine: nature and type
 speed
 gear's daily working time
 Type of coupling of shaft on the driving shaft and

型号 Specification	主动轴 The driving shaft												从动轴 The driven shaft		
	U=3.15-4			U=4.5-5.0			U=5.6-6.3			U=7.1			U=3.15-7.1		
	d	q	l	d	q	l	d	q	l	d	q	l	D	Q	L
JDX-28	80	215	180	70	195	160	55	195	140	50	195	120	125	215	200
JDX-36	115	245	200	85	225	180	75	225	160	60	225	140	145	255	230
JDX-45	135	305	230	115	295	185	95	295	175	80	295	165	170	375	240
JDX-56	155	355	300	135	330	230	115	330	200	105	330	200	225	355	340
JDX-63	170	375	340	150	350	260	130	350	230	110	350	200	240	375	380
JDX-71	180	390	340	160	365	300	150	365	230	130	365	230	260	390	400
JDX-80	220	450	380	200	425	340	180	425	260	150	425	230	280	450	460
JDX-90	260	520	400	240	495	340	200	495	300	170	495	260	300	520	480
JDX-100	280	590	460	260	565	400	220	565	360	190	565	300	330	590	520

型号 Specification	外型及安装尺寸 Dimensions of outline and installation (mm)															质量 weight kg	
	a	A	B	f ₁	f ₂	G	h	H	R	N	T	U	V	F	M		S
JDX-28	280	710	290	305	305	240	360	680	210	6	23	40	848				500
JDX-36	360	927	360	390	390	300	450	850	273	6	23	40	1047				900
JDX-45	450	1220	480	520	580	420	560	1036	420	6	35	40	1300				1750
JDX-56	560	1400	640	620	620	540	500	1330	435	6	39	35	1620	1000	340	250	2700
JDX-63	630	1520	680	680	680	590	500	1490	480	6	39	35	1740	1145	375	300	3300
JDX-71	710	1740	700	750	750	600	500	1530	530	6	39	40	1950	1445	415	350	4900
JDX-80	800	1950	800	850	850	690	500	1764	600	6	45	50	2190	1625	430	450	5800
JDX-90	900	2145	900	930	960	800	600	1990	665	6	45	50	2425	1785	500	500	8500
JDX-100	1000	2440	950	1500/2	610	830	600	2120	850	8	51	60	2720	2040	560	500	10600

- ※ 主动轴径d和从动轴径D的公差范围是：m6键的尺寸根据轴径按GB1095-79确定。
- ※ Tolerance range of driving shaft diameter d and driven shaft diameter D: m6
- ※ Dimensions of key can be obtained from GB1095-79 according to shaft diameter

JDX系列齿轮箱功率表Pn The power table of JDX family gearbox

名义速比 Nominal Speed ratio U	输入转速 Input Speed n (r/min)	齿轮箱型号 Specification of gearbox										(kW)				
		JDX-28	JDX-36	JDX-45	JDX-56	JDX-63	JDX-71	JDX-80	JDX-90	JDX-100						
3.15	1500	576	1152	2448												
	1000	384	768	1632	2560	3200	4800	6400								
	750	288	576	1224	1920	2400	3600	4800	7920	10800						
	600	230	460	980	1536	1920	2800	3840	6336	8640						
3.55	1500	480	960	2160												
	1000	320	640	1440	2240	2880	4032	5440								
	750	240	480	1080	1680	2160	3024	4080	6960	9240						
	600	192	384	864	1344	1728	2420	3264	5568	7392						
4.0	1500	408	816	1776												
	1000	272	544	1184	1760	2432	3360	4608								
	750	204	408	888	1320	1824	2520	3456	5903	7800						
	600	163	326	710	1056	1460	2016	2765	4723	6240						
4.5	1500	360	696	1488												
	1000	240	464	992	1536	2080	2816	3840								
	750	180	348	744	1152	1560	2112	2880	4920	6600						
	600	144	278	595	920	1248	1690	2304	3936	5280						
5.0	1500	312	576	1248												
	1000	208	384	832	1280	1792	2346	3200								
	750	156	288	624	960	1344	1760	2400	4200	5680						
	600	125	230	500	768	1075	1408	1920	3360	4544						
5.6	1500	240	480	960	1632	2160										
	1000	160	320	640	1088	1440	1984	2880								
	750	120	240	480	816	1080	1488	2160	3600	4800						
	600	96	192	384	652	864	1190	1720	2880	3840						
6.3	1500	216	384	768	1344	1920										
	1000	144	256	512	896	1280	1728	2304								
	750	108	192	384	672	960	1296	1728	3000	4000						
	600	86	153	307	537	768	1038	1382	2400	3200						
7.1	1500	168	336	672	1056	1632										
	1000	112	224	448	704	1088	1440	1920								4346
	750	84	168	336	528	816	1080	1440	2400	3260						
	600	67	134	268	422	652	864	1152	1920	2610						